

📍 Our Global Presence

Head Branch : Mumbai (India)



**BLAZE MACHINERY**

Manufacturing processing plants for potato & banana chips, salted snacks (Namkeen) and suitable for various restaurants, catering equipment.

**BLAZE Machinery**  
*Strongest pillar of food industry*

Workshop:  
 Gala No. 3, Dixit Compound, Navpada Lane, S.V. Road,  
 Ajit Glass Area, Jogeshwari (West),  
 Mumbai - 400 102. Maharashtra (India)  
 Mobile: +91 98205 44121 / 98205 44120



Our Distributor:  
 Enkay Indo-Nigerian Industries Limited  
 NCIE Building, Beside LASTMA office, Oshodi, Lagos, Nigeria  
 Contact no. 📞 +234 817 679 5091  
 Mr. Dharmendra Pandey: +234 808 666 4505

inquiry@blazemac.com  
 enkayindo@blazemac.com

www.blazemac.com  
 www.potatochipsmakingmachine.com

Roasting Machine



Roasted Peanut Peeling Machine



Filter Tank

Oil Cooling Tank

Tilting Pan

Rectangular Fryer with inbuilt heat exchanger



Cooking for the next generation  
 www.blazemac.com

Welcome to the  
**STATE OF ART**  
technology in food processing industry

Sustain Technology - Solutions Engineered to improve the outcome while reducing labour cost - across a complete portfolio of Broad range of Food processing machines imported from Technological Leaders from Italy, Brazil and China with a cost effective Technology. The in house productions of Machinery manufactured are engineered as per international Standards

**BLAZE MACHINERY**

Manufacturing processing plants for potato & banana chips, salted snacks (Namkeen) and suitable for various restaurants, catering equipments

## POTATO CHIPS PROCESSING MACHINE

### POTATO PEELER

Used for peeling the raw potato, with the help of special emery lining inside the feeder. Our potato peeler or potato peeling machine is designed aesthetically and is used to peel the skin of potatoes at a faster speed. Our potato peeler leads to minimize peel loss. For better peeling, the continuous flow of water in the drum helps to keep away the waste from a drainage pipe. The drum storage capacity is about 6 to 8 kg in base model and 12-15 kg in higher version model of potato peeler.



**MODEL : BM - PPS**

The technical specification of our peelers are :

**Power** : 1 HP Motor,  
**Production Capacity** : 150 kg/hr machine capacity  
**Capacity** : Storage Capacity 8 to 10 kg  
**Dimensions** : 560 x 560 x 1000mm  
**Net Weight** : 60 kg  
**Electric Use** : 220 or 415 volt



**MODEL : BM - PPB**

The technical specification of our peelers are :

**Power** : 2 HP, Storage Capacity 14 to 15 kg  
**Capacity** : 300-350 kg /hr machine capacity  
**Dimensions** : 650 x 560 x 1000 mm  
**Net Weight** : 120 kg  
**Electric Use** : 415 volt



## POTATO SLICER



MODEL : BM - PSTF

(TOP FEEDING MACHINE)

Used for making slices of the potato, with the help of specially designed round cutting plate, provided with the machine. There are different types of plates, named as sally plate (useful for sticks like chips) and raffle plate (which comes out by strip design on chips). All plates have adjustable special material blades. Our machine avoids less deposition of broken pieces in the disc.

The technical specification of our slicer are:

**Power** : 1 HP  
**Capacity** : 300-350 kg/hr machine capacity  
**Dimensions** : 650 x 560 x 1200 mm  
**Net Weight** : 120 kg  
**Electric Use** : 220 / 415 volt

MODEL : BM - PSHP



### HAND PUSH MODEL

The technical specification of our slicer are:

**Power** : 1/2 HP Motor  
**Capacity** : 100 kg/hr  
**Dimensions** : 840 x 360 x 1120 mm  
**Net Weight** : 55 kg  
**Electric Use** : 220 / 415 volt

## BANANA SLICER

MODEL : BM - BSTF

(TOP FEEDING MACHINE)



This machine is used for slicing bananas as plain rippled chips; peeled banana are fed manually from the top then sliced chips. Machine is mounted over a frying pan. Shapes of slices are elliptical and thickness about 2 to 3mm in size. Easy to handle, this machine requires low maintenance.

The technical specification of our slicer are:

**Power** : 1 HP Motor  
**Capacity** : 200-250 kg / Hr  
**Dimensions** : 650 x 560 x 600 mm

**Note** : Different shape and size of disc available

## DOUGH KNEADER

MODEL : BM - DK 25



Dough Kneader are specially designed for heavy duty mixing in the catering units and restaurants. The kneader is manufactured using stainless steel with rotating arms and bowls. Our kneader take lesser time and gives better water absorption. They also fold and stretch the dough for aeration and fermentation. The machine consists of a stainless steel bowl, which moves at a slow speed. Its makes easier for preparing chapattis, puris, bread, etc.

Model	Voltage	Power	Capacity
BM 10	220v	0.5 Hp/50hz	10 Kg
BM 25	220v/ 415v	1 Hp/50hz	25 Kg
BM 40	415v	2 Hp	40 Kg

## POTATO DRYER

After cleaning the sliced potatoes into water, the excess surface water is removed in the potato drying machine or dryer machine which is a centrifugal system and removes approximately 30% to 40% of water enabling the potato to fry properly in a machine. Contain S.S. Basket with a storing capacity up to 8 to 10 kg of sliced potatoes.

The technical specification of our dryer are:

**Power** : 1 HP Motor  
**Capacity** : 200 to 250 kg/hr machine capacity  
**Dimensions** : 610 x 660 x 800 mm  
**Net Weight** : 80 kg (approximately)  
**Electric Use** : 220 or 440 volt

**NOTE** : THIS MACHINE REQUIRE CEMENT FOUNDATION

(Tilting Model also Available)

MODEL : BM - PD 12 "



MODEL : BM - NESS 9

## DOUGH EXTRUDER MACHINE

Useful for making various type of snacks such as Sev, Ghatiya, Bhavnagri, Papdi, Chin Chin dough etc, with the help of different type of mesh provided with the machine. This snacks making machine is directly mounted on the fryer (bhatti). All connecting part made of 304 Stainless Steel. Different type of mesh shape is available.

The technical specification of our snacks making machine are:

**Power** : 1 HP Motor  
**Capacity** : 150 kg / hr machine capacity  
**Dimensions** : 1400 x 310 x 460 mm



MODEL : BM - FM

## FLAVORING MACHINE



We manufacture batch type chips flavouring machine with stainless steel container, used for adding various spices to fried potato chips, plantain chips, banana or cassava chips in batches. In this machine, a pan with a circular mouth for charging and discharging of fried food products is mounted at an inclination of 45 degrees to the horizontal. The motor and gear box is mounted inside sturdy mild steel frame and the pan mounted on the gearing housing is fitted in the stand. This technically accurate machine is easy to install and it requires less maintenance.

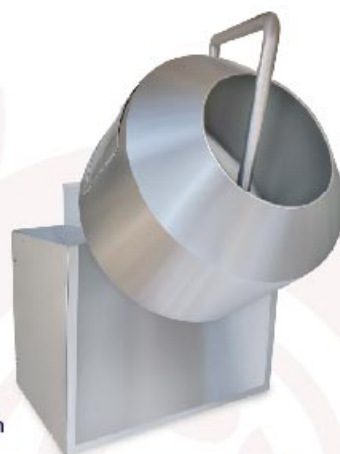
The technical specification of our mixing machine are :

**Specification** : 60 kg / Hr  
**Power** : 0.5 HP Gear Motor  
**Capacity** : 4-5 kg for light weight snacks like chips, fryums etc & 10 kg for namkeen  
**Net Weight** : 150 kg Approx

## COATING PAN

The technical specification of our mixing machine are :

**Pan rotation speed** : 25 / 30 rpm  
**Power** : 1 HP  
**Capacity** : 25 kg, 100 kg  
**Hot air blowers** : 4.5kw heaters, Temperature ranges from ambient up to 70 degree Celsius. Air blower variable from 1 to 4.5 m3/min Filter supplied.  
**Cold air blowers** : As above with heaters off  
**Cold air blowers** : 1070 x 1370 x 1730 mm, Dia 840 x 820mm



MODEL : BM - FCM

## SAMOSA DOUGH KNEADER



MODEL : BM - SMS 25

We offer quality samosa dough kneader that is high-grade stainless steel. Meeting the industry norms and protocols, these are used in making snacks. They find utility in hotels, caterers, bakeries and processed food making units. These mixers are ideal for making soft, hard and fermented dough that are ideal for salty snacks. These electric mixers ensuring uniform dough making.

The technical specification of our kneaders are :

**Specification** : 1HP Motor, 1440 rpm  
**Container Capacity** : 25 kg  
**Producing Capacity** : 100-150 kg/hr  
**Net Weight** : 150 kg Approx

Option of model available with or without electric panel board

## SAMOSA DOUGH SHEETER

We offer quality samosa dough sheeters that is robust and efficient. They are fast and easy to use. Made of high quality stainless steel, these machines are sturdy and easy to maintain as well. The sheeter gives uniform and hygienic dough sheets for making samosas and other similar snacks. Precise configuration of the sheeting machine avoids doubling or tearing of sheets. These are fully automatic machines.

The technical specification of our kneaders are :

**Specification** : 1HP Motor, 1440 rpm  
**Producing Capacity** : 2000 samosa sheets /hr  
**Dimension** : 1400 x 600 x 1050 mm Ht  
**Net Weight** : 150 kg Approx



MODEL : BM - SP 12

## CHIPS MAKING PLANT

### BLAZE MACHINERY

Manufacturing processing plants for potato & banana chips, salted snacks (Namkeen) and suitable for various restaurants, catering equipment.



Potato Peeler



Potato Slicer



Potato Dryer



In-built Heat Exchanger Rectangular Fryer



Flavoring Machine



## KHOYA / GARRI ROASTING MACHINE

MODEL : BM - KMGTL 100



(TILTING MODEL)



MODEL : BM - KMG 100

We are experts in manufacturing and supply of sweet making machines. This machine is used to prepare the famously loved milk khoya which is used in making many Indian sweets (milk-based, roasting, garri and other powder items). Easy to use and low maintenance, this machine is both - cost-effective and fuel-efficient. The machine is manufactured using SS body and the vessels are made of stainless steel vessels and uses natural LPG Gas, or diesel. It is also available in different sizes, capacity tilting and non tilting model

The technical specification of our khoya machine are :

<b>Specification</b>	: 1HP Motor, 1440 rpm
<b>Producing Capacity</b>	: 20 ltr in 30 Min
<b>Dimension</b>	: 970 x 660 x 1165 mm Ht
<b>Net Weight</b>	: 160 kg Approx

## POTATO BOILER MACHINE



MODEL : BM - PB

We offer potato boilers used to provide even and uniform boiling of potatoes, these boiler machines are made of food grade stainless steel, hence are rust proof. Easy to operate, these machines are safe, resistant to colouring and easy to maintain. These potato boiler machines are economical and can be customised according to buyers requirements.

The technical specification of our Milk Boiler machine are :

<b>Specification</b>	: Gas or Electric Operated
<b>Production Capacity</b>	: 60 - 80 kg per hr
<b>Holding Capacity</b>	: 30 - 40 kg per batch
<b>Tray Capacity</b>	: 8 - 10 kg / Tray
<b>Dimension</b>	: 540 x 540 x 1220 mm HT
<b>Net Weight</b>	: 60 kg Approx

**Highlights :**

- Power Saving
- Large Capacity
- Sturdy Construct
- Durable

## MILK BOILER / MIXING MACHINE

Fryer insulated with high quality ceramic blanket with a stainless steel cover. The machine is equipped with a 1 HP motor and stirrer with high quality Teflon scraper Bottom Plate heavy-duty 20 mm thick MS material.

The technical specification of our Milk Boiler machine are :

<b>Specification</b>	: 1HP Motor, 1440 rpm
<b>Producing Capacity</b>	: 300 - 400 ltr Milk
<b>Dimension</b>	: 1020 Dia x 610 mm Ht
<b>Net Weight</b>	: 200 kg Approx

Mainly used for : Fresh Milk Boiling, White & Brown Basundi, Ice-Cream Industries for making kulfi & Ayurvedic Medicine

**Highlights:** Power Saving, Sturdy Construct, Durable

**Option :** Contain available with or without ceramic lining and with electric controlled panel



MODEL : BM - MBT 200

## TRADITIONAL CIRCULAR FRYER

We offer circular batch fryer with diesel or kerosene burner that is insulated with ceramic blanket glass wool. It has a refractory lining outer body manufactured using stainless steel. It is economical, environment friendly, safe and easy to operate. These fryer are ideal for chips (potato, banana), namkeens, sweets etc. These fryers can be availed in different sizes as per the requirement.

The technical specification of our Fryer are :

<b>Specification</b>	: 1HP Motor, 3000 rpm
<b>Production Capacity</b>	: 20 - 25 kg / hr
<b>Dimension</b>	: 920 x 1530 mm
<b>Net Weight</b>	: 200 kg Approx

**Note:** All building materials and chimney spare should be provided by consignee.



MODEL : BM - DBS 32

MODEL : BM - DF



## RECTANGULAR FRYER



MODEL : BM - RFDD

It is rectangular batch fryer to be operated by diesel or gas. The burner is inserted with ceramic blanket glass wool, refractory lining outer body fabricated by stainless steel body. It is more economical, environment friendly, safe and easy to operate. This system is ideally suited for chips (potato, plantain cassava) and other low bulk density products like namkeens, indian snacks etc. These fryers can be availed in different sizes & model as per the requirement.

The technical specification of our Fryer are :

<b>Production Capacity :</b>	30 - 40 kg / hr potato chips
<b>Dimension :</b>	1250 x 2300 x 1040 mm
<b>Net Weight :</b>	400 kg Approx
<b>Floor Space :</b>	6 x 8 ft

## WET GARLIC PEELER



MODEL : BM - WGP

The only way to avoid an unpleasant waste of time. Our garlic peeler has been designed to peel garlic in a quick, delicate manner and to minimize manual operations. Garlic peeling is, in fact, one of the most annoying and unpleasant operation in the kitchens of catering establishments. After the cloves have been opened by hand, the operator will load the machine (up to 5 Kgs. per load): our will quickly, softly peel each clove and immediately discharge the peel. This will be done within a pre-set time, and will save up to 90% of the time normally required for manual peeling. A high level of hygiene is ensured thanks to the abrasive disk, which can be easily taken off and washed with water in a few seconds

Power	Dimension (mm)	Production Capacity	Net Weight
1/2 HP Motor	560 x 560 x 1000	20 Kg/Hr	50 Kg Approx

## CIRCULAR BATCH FRYER

It is batch type snacks processing equipment for frying all kinds of snacks. This frying equipment ensures that all namkeen should be fried at the genuine temperature for quality output of product. The equipment is available in different sizes depending upon the production capacity. Runs on diesel/ LPG/ Natural gas as fuel

The technical specification of our Fryer are :

<b>Specification :</b>	Motor oil pump 3 HP, 3000 rpm
<b>Production Capacity :</b>	40 - 50 kg / hr
<b>Net Weight :</b>	400 kg Approx
<b>Floor Space :</b>	4 x 6 ft



MODEL : BM - CBFD

## MANGO PULPER

Blaze Machinery offers fruit pulping machine is suitable for separating residues and pulps from pome fruits and various berries. Blaze Machinery undertakes design, development and production of specialized food and beverage processing equipment and automated process to the individual customer requirements. Fruit pulper with motor is used to extract pulp from fruits, vegetables and other pulpy items. During the operation, the seeds and skin get separated and discharges through a chute. It is commonly used in canning industry and Ayurveda medicine manufacturing units. This machine can also be used for pepper de-skinning and washing of spices. The machine is supplied with motor

Available model of mango pulp making machine

Model	Power	Dimension	Capacity
BM-MPM-50	1 HP	36 x 19 x 30	50 kg/hr
BM-MPM-50	1.5 HP	42 X 24 X 33	175-200 kg/hr



MODEL : BM - MP



## WET GRINDER



MODEL : BM - WG5

**D**escription of Gravy Machine the Blaze Machinery manufacturer and exporter of gravy making machine has been designed after years of research, trial and test. It occupies very little space, easy to operate, wash and clean. The gravy obtained is as good as hand ground paste, and all contacting parts are stainless steel food grade steel thus no corrosions hazards.

The technical specification of our wet grinder are :

**Power** : 5HP 415v  
**Production Capacity** : 200kg/hr  
**Dimension** : 1800 x 450 x 550 mm  
**Net Weight** : 70 kg Approx

## MATHRI / CHIN CHIN CUTTING MACHINE



MODEL : BM - MCCCCM

**B**laze Mathri/Chin Chin cutting machine have 4 coated roll, P.V.C food grade endless belt. There are many belts which has its own role such as cotton canvass belt which is use for transferring wastage of stainless steel hopper for recycling, on this steel fabricated angle stand the complete unit is mounted which will get covered with sheets of SS sheets. It finalize it with one die roll with gear box and P.V.C. Dies, 1 H.P. A electric as per our standard supply. This Machine can also be used for the preparation of Farsi papad, raw chapatti, mathi puri, chat papadi, stick, Nachos, Farsi Puri, Sakkarpara, mathri, samosha puri, tortilla, Chin Chin and many more food items.

The technical specification of our cutting machine are :

**Power** : 1HP with VFD  
**Production Capacity** : 2000 Pcs/hr  
**Belt** : 3 Belt (1 return west)  
**Dimension** : 914 x 762 x 1270 mm

## PACKING MACHINE

### TECHNICAL SPECIFICATION FOR MODEL BM-2HLWRD VERTICAL FORM FILL SEAL MACHINE WITH 2HEAD LINEAR WEIGH FILLER

Packing Machine Specifications	
1. Machine	Model BM-2HLWRD with 2Head LINEAR Weigh Filler
2. Product	Potato Chips, Puff Corn, Snacks etc
3. Sealing	Center seal
4. Pouch size	Max Roll width 320 mm. Length controlled as per eye mark-no restriction.
5. Range	10 to 75 gms With using change parts. Max pouch Size 6" x 9"
6. Out-put pouches per minute	10 - 12 pouches/ min.
7. Suitability	Any heat sealing films (laminates) or Alum foil based material.
8. Power Requirement	5 KW. ( Motor,Vibration coils, Heaters)
9. Net Weight	400 kg (approx.) with filler.

Material of construction	
1. Contact Part	Stainless Steel SS304
2. Non-contact Steel / MS parts like body	Powder Coating or Electrolysis Nickel or Chrome plating covers
3. Overall Dimension including Electrical panel & Un-wind	4ft( width) X 6 ft ( depth) X 9ft ( height)
4. Filling unit	2 Head Linear Weigh Filler.
5. Pouch cutting - Horizontal cutting (along the width of the sachet )	Zig Zag cutting blade
6. Accuracy	+/- 2 % Per 100 Consecutive Weights Actual accuracy depend upon type of product and consistency in it's flow characteristics



MODEL : BM - PM